

Fowler

Water Resistant IP54 Electronic Calipers



Four Button Electronic Pack P2
Part Number: 05-100-039
Note: Not compatible with three button versions.



Three Button Electronic Pack P1
Part Number: 05-100-038
Note: Not compatible with four button versions



Locking Screw L1
Part Number: 05-100-042



Display Crystal C1
Part Number: 05-100-045
Note: Compatible with four button displays only.



Thumbwheel Holder (4B)
Part Number: 05-100-040
Note: Compatible with four button displays only.



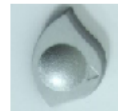
Thumbwheel T1
Part Number: 05-100-041



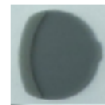
Thumbwheel Holder (3B) T2
Part Number: 05-100-052
Note: Not compatible with three button versions.



End Stop Screw
Part Number: 05-100-079



Caliper Battery Cover B1
Part Number: 05-100-044
Note: Compatible with four button displays only.



Rubber Battery Seal S1
Part Number: 05-100-043
Note: Compatible with four button display only



Rubber Battery Seal S3
Part Number: 05-100-063
Note: Compatible with three button displays for 6, 8, and 12 inch calipers only.

Part Number	Range	Accuracy	Resolution
54-100-777-2	6"/150mm	0.001"/.02mm	0.0005"/.01mm
54-100-712-2	12"/300mm	0.0015"/.03mm	0.0005"/.01mm
Accessories			
54-520-399-0	Data Cable		
54-100-350-0	CR2032 Battery		



EURO-CAL IV Electronic Calipers



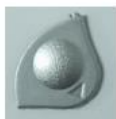
54-100-330-1



Locking Screw L1
Part Number: 05-100-042



Euro-Cal Electronic Pack
Part Number: 05-100-046



Euro-Cal Battery Cover
Part Number: 05-100-048



Thumbwheel Holder Euro-Cal
Part Number: 05-100-047



Euro-Cal Battery Seal
Part Number: 05-100-111



Thumbwheel T1
Part Number: 05-100-041



End Stop Screw
Part Number: 05-100-079

Part Number	Range	Accuracy	Resolution
54-100-330-1	6"/150mm	±0.001"/.02mm	0.0005"/.01mm
54-100-331-0	8"/200mm	±0.001"/.02mm	0.0005"/.01mm
54-100-332-0	12"/300mm	±0.0015"/.03mm	0.0005"/.01mm
Accessories			
54-100-350-0	CR2032 Battery		

*Quality caliper
Absolute ceramic scale
ensures the caliper will
never lose its reference
point - Never zero your
caliper again!*



*Features fast inch,
metric and fractional
conversion.*



INCH • METRIC • FRACTION™

